



**PHILIPS**

**VOLCANO**

Program

**Philips Volcano**  
booth M65  
on level 2

**Azurion Experience**  
booth F18  
on level 1

Guiding tomorrow's  
innovation. **Today.**

**EuroPCR 2017**, Paris, 16 - 19 May 2017 -  
Palais des Congrès de Paris

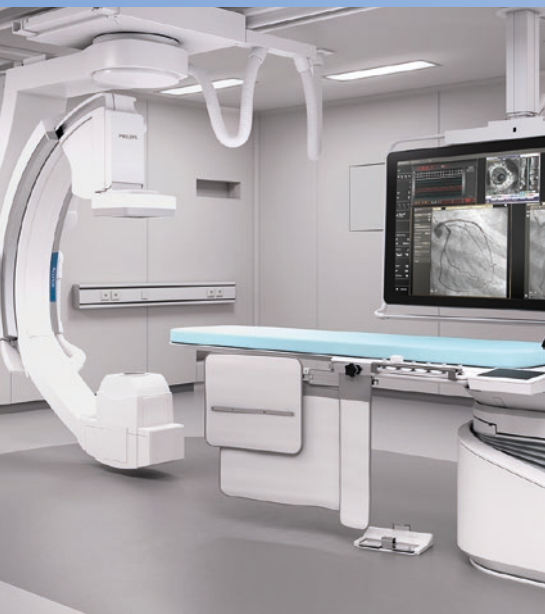
# Guiding tomorrow's innovation. **Today.**

By focusing on the people at the heart of cardiovascular care, we help you effectively target the needs of your patient population across the health continuum.

As a leader in image guided therapy, we are committed to partner with you to improve treatment for every patient.

Our vision is to provide integrated solutions that advance minimally invasive procedures by helping you to decide, guide, treat and confirm the right therapy for the right patient at the point of care. Working together to realize this vision, we can save and improve lives and reduce the total cost of care by making therapy more efficient, more appropriate and more personal.

Join the **Training Villages** and take part in our **Symposium** that explores our innovations in more detail.



With Philips Azurion,  
**performance and  
superior care become one**

At EuroPCR you will  
be able experience  
Philips Azurion at  
**booth F18 on level 1.**



Already start to interactively explore the  
new Philips Azurion environment. See how  
its new innovations can transform your  
interventional workflow  
[www.philips.com/EuroPCR](http://www.philips.com/EuroPCR)

# Training Village program (Hall Paris)

Sponsored by Philips Volcano

## Tuesday, 16 May

Time	Session title	Speakers	Room
12.00-13.00	SyncVision co-registration case-based session	J. Davies, J. Singh	1
14.00-15.00	IVUS image interpretation	A. Sharp	1
15.30-16.30	Left main complex case	N. Curzen, M. Egred	1
17.00-18.00	CTO	R. Garbo, G. Werner	1

## Wednesday, 17 May

Time	Session title	Speakers	Room
09.30-10.30	iFR outcome data DEFINE-FLAIR and iFR-SWEDEHEART	J. Davies, J. Escaned, M. Götberg	1
11.00-12.00	Devices used for multivessel disease	A. Banning, J. Escaned	1
12.30-13.30	SyncVision co-registration hands-on session	A. Sharp	2
14.00-15.00	Case-based discussion of treatment dilemma in a complex left main	D. Dudek, J. Legutko	1
15.30-16.30	IVUS image interpretation hands-on session	A. Sharp	2
17.00-18.00	HeartNavigator workshop: Expert clinical case-based discussion and hands-on session on TAVI and TMVR	C.E. Ruiz	1



## Healthy hour, 16.00-17.00

Daily at the Philips Volcano booth M65 on level 2



## Add the individual trainings of your interest to your calendar

It is not possible to reserve a place in advance.

[www.philips.com/EuroPCR](http://www.philips.com/EuroPCR)



### Thursday, 18 May

Time	Session title	Speakers	Room
10.00-11.00	HeartNavigator workshop: Expert clinical case-based discussion and hands-on session on TAVI and TMVR	C.E. Ruiz	1
12.30-13.30	iFR outcome data DEFINE-FLAIR and iFR-SWEDEHEART	J. Davies, M. Götzberg	1
12.30-13.30	SyncVision co-registration hands-on session	A. Sharp	2
14.00-15.00	Case-based discussion - changing treatment from CABG to PCI	R. Al-Lamee, R. Petraco	1
14.00-16.00	Hands-on session: IVUS image interpretation	J. Ligthart	2

### Friday, 19 May

Time	Session title	Speakers	Room
10.00-12.00	Hands-on session: IVUS image interpretation	J. Ligthart	2

# Training Village program (Hall Ternes)

Sponsored by Abbott and Philips

## Basics of the MitraClip NT technique and procedural Echo guidance

by Dr. A. Gonzales or Dr. P. Li

Tuesday, May 16,

16.30-18.00, Dr A. Gonzales

Wednesday, May 17,

16.00-17.30, Dr. P. Li

### Attend this session if you want to:

- Understand the basics of the MitraClip NT therapy: From screening to procedure and from technical to clinical aspects
- Practice MitraClip NT patient screening and procedure guidance with TEE Echo Philips Ultrasound Fusion system
- Interact with MitraClip NT

## Advanced MitraClip NT technique and procedural Echo guidance

by Dr. S. Von Bardeleben or Dr. P. Li

Wednesday, May 17,

11.30-13.00, Dr. P. Li

Thursday, May 18,

9.00-10.30, Dr. S. Von Bardeleben

### Attend this session if you want to:

- Learn advanced management of MitraClip NT patient screening and procedural guidance
- Practice advanced MitraClip NT patient screening and procedure guidance with TEE Echo Philips Ultrasound Fusion system
- Practiced advanced management of MitraClip NT device

**Register** at Abbott booth or via your Abbott structural heart representative.

# Symposium Room 241

Sponsored by Philips Volcano

## Clinical outcome data from DEFINE-FLAIR and iFR-SWEDEHEART: Implications for coronary revascularization practice with iFR co-registration

Wednesday, May 17,

16.30-18.00 - Room 241

Chairpersons: C. Di Mario, P.W. Serruys

Faculty: A. Banning, J. Davies,

J. Escaned, M. Götberg

Panelists: H. Matsuo, M. Patel

### Attend this session if you want:

- To learn about the primary outcomes from DEFINE-FLAIR and iFR-SWEDEHEART
- To learn how upcoming iFR studies will address physiology guidance in multivessel disease and entire vessel assessment
- To learn how iFR co-registration simplifies complex coronary intervention.

**Sign up** to receive a recording of the Symposium “Clinical outcome data from DEFINE-FLAIR and iFR-SWEDEHEART” after EuroPCR.

Sign up via

[www.philips.com/EuroPCR](http://www.philips.com/EuroPCR)



# Latest innovations

## iFR Roadmap

**Express iFR co-registration guides you to make your decisions**

iFR Roadmap<sup>1,2</sup>, a Philips exclusive technology and an extension of Dynamic Coronary Roadmap, provides an automated, real-time, co-registration of the iFR physiological measurement with its anatomical location on the Dynamic Coronary Roadmap.

## SyncVision

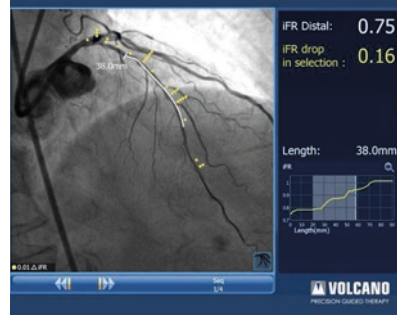
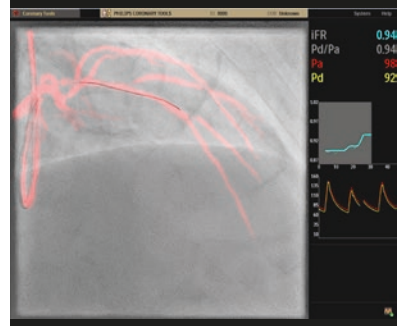
**Advanced Imaging Solutions**

SyncVision package in concert with CORE IVUS and physiology provides an Advanced Imaging Solution designed to address imaging and physiological challenges in the cath lab. It allows you to streamline lesion assessment, simplify vessel sizing, and support precise therapy delivery. Simply put, that means more confidence for you and better care for your patients.

## With Philips Azurion, performance and superior care become one

**The new-generation image guided therapy platform**

Philips Azurion allows you to easily and confidently perform procedures with a unique user experience, helping you optimize your lab performance and provide superior care. Azurion is powered by ConnectOS, a realtime multi-workspot technology designed specifically for the Azurion interventional suite. DoseWise Azurion combines a variety of dose management strategies and techniques that help you to deliver the enhanced balance between dose level and image quality. With this new future proof platform you can deliver outstanding care and grow your service line over time.



## DEFINE-FLAIR study results!

Read all about the study result on [www.philips.com/EuroPCR](http://www.philips.com/EuroPCR)

DEFINE-FLAIR reported a **90% reduction** in patient discomfort<sup>3</sup>

<sup>1</sup> iFR Roadmap is not a standalone technology. It can only be purchased as part of the Dynamic Coronary Roadmap package.

<sup>2</sup> iFR Roadmap is not yet CE marked and not yet available for delivery.

<sup>3</sup> Davies JE, et al., DEFINE-FLAIR: A Multi-Centre, Prospective, International, Randomized, Blinded Comparison of Clinical Outcomes and Cost Efficiencies of iFR and FFR Decision-Making for Physiological Guided Coronary Revascularization. New England Journal of Medicine epub March 18, 2017.

This material is not for distribution in the United States.  
© 2017 Koninklijke Philips N.V. All rights reserved. Specifications are subject to change without notice.



[www.philips.com/EuroPCR](http://www.philips.com/EuroPCR)

4522 991 27391 \* MAY 2017